

USER GUIDE

cligear[®] cart



**ENGLISH
(STD)**

**MODEL
1.0**

www.cligear.com

CONGRATULATIONS!

Every effort has been made to provide you with a unique and high quality product. Thank you for choosing the Clicgear Cart.

IMPORTANT

Before you start using your new Clicgear Cart, please read and understand the following important instructions and warnings contained in this user guide.



WARNING

FOR YOUR OWN SAFETY, PLEASE READ AND UNDERSTAND THESE WARNINGS AND KEEP THIS USER GUIDE FOR FUTURE REFERENCE.

- **This cart is not a toy and is designed for adult use only.**
- **This cart is not intended for use as a baby stroller.**
- **AVOID INJURY** by always following the folding instructions carefully.
- **AVOID INJURY** by keeping clear of moving parts while adjusting, folding or unfolding this cart.
- **ALWAYS** make sure the cart is fully extended and locked before use.
- **ALWAYS** make sure the cart is folded and locked properly before lifting or transporting.
- **ALWAYS** use the brake when parking the cart and ensure it is adjusted properly.
- **DO NOT** run while using this product.
- **DO NOT** use accessories other than those designed for use with your Clicgear Cart.
- **KEEP** all packing materials away from children and recycle where possible or where required by law.

1 YEAR LIMITED WARRANTY

Clicgear warrants the Clicgear Cart to be free from manufacturing or material defects for a period of one (1) year from date of purchase. This warranty does not cover normal wear or damage that occurs through abuse, accident, neglect or failure to follow the instructions or warnings contained in this user guide. Clicgear remains the sole judge of any and all warranty claims. Proof of purchase is required.

CLAIM PROCEDURE

If you have a warranty claim or require parts for a product purchased in your distribution area. Please contact the Clicgear Distributor for your region by phone through the contact information supplied with the packaging of this product. Contact information for your Clicgear Distributor can also be found at the following website under the Distributor page:

www.clicgear.com

Your Clicgear Distributor will make every attempt to correct the problem by supplying you with the information or replacement parts required. However, if the cart must be returned for any reason, they will issue an Returned Goods Authorization (RGA) number that must accompany any returned cart. Carts returned without this RGA number will not be accepted.

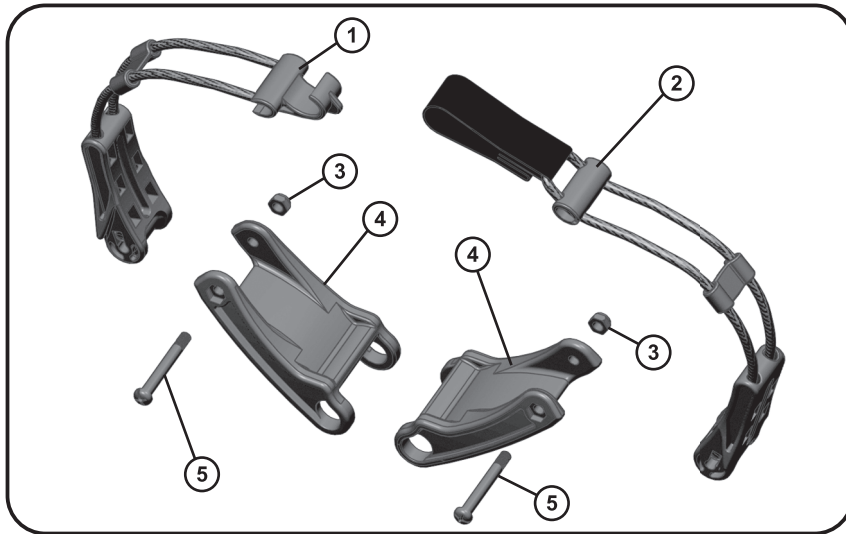
CARE AND MAINTENANCE

Your Clicgear Cart is designed to provide many years of trouble free service. However, it is important to keep the cart clean and the brake adjusted properly, (see Brake Adjustment pages 2-3). It is also a good idea to check the cart over, before and during each golf season, looking for loose fasteners and damaged parts. Tire pressure should be checked regularly. If required, tires should be inflated to 28 PSI (193kPa) Maximum, using the pump supplied with your Clicgear Cart.

TECHNICAL SPECIFICATIONS

Clicgear reserves the right to make changes to color, materials, this user guide and design specifications without notice. All designs are protected by US and international patents or patent pending status.

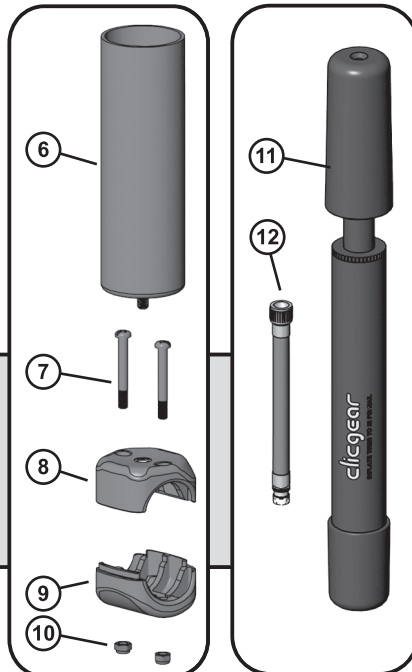
PARTS - BAG STRAP ASSEMBLY



- 1 BAG STRAP HOOK SIDE
- 2 BAG STRAP PIN SIDE
- 3 M6 NYLOCK NUT
- 4 SADDLE
- 5 M6 X 48mm BOLT

PARTS - ACCESSORY MOUNT & PUMP

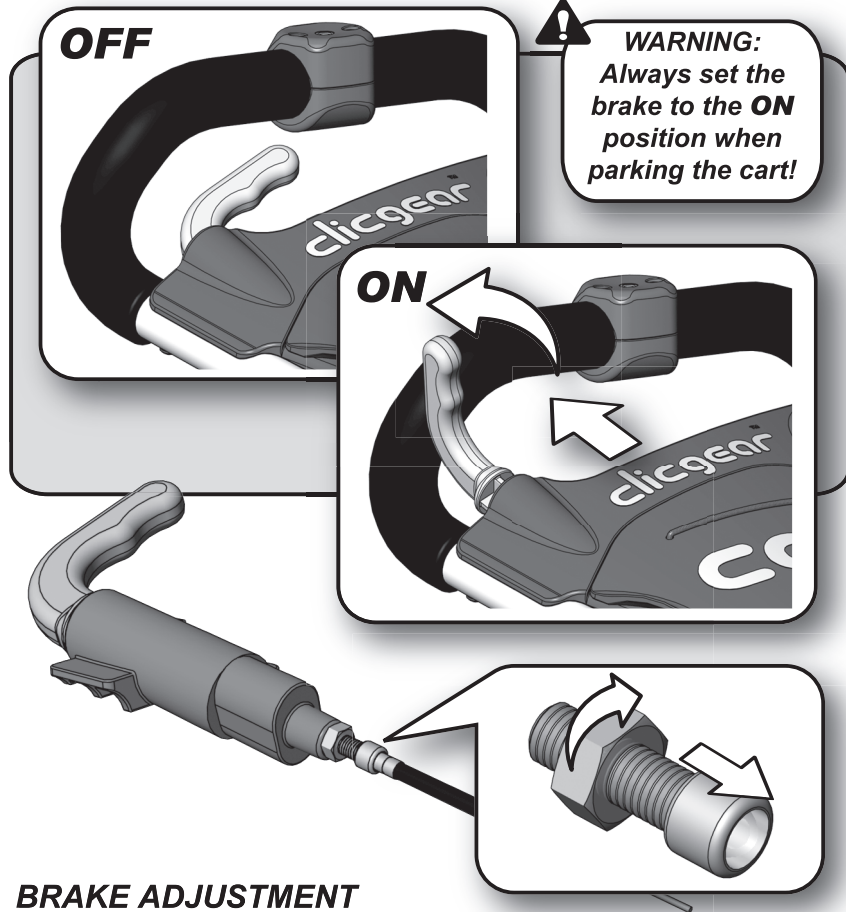
- 6 UMBRELLA MOUNT
- 7 M5 X 40mm BOLT
- 8 TOP MOUNT
- 9 BOTTOM MOUNT
- 10 M5 NYLOCK NUT
- 11 PUMP
- 12 PUMP TUBE



13

USING THE BRAKE

Your cart is equipped with a positive lock brake. This means the brake is either **ON** or **OFF**. To apply the brake, pull the brake handle out and turn up to the right. To release the brake, simply tap it to the left and the brake handle will be returned back to the **OFF** position.



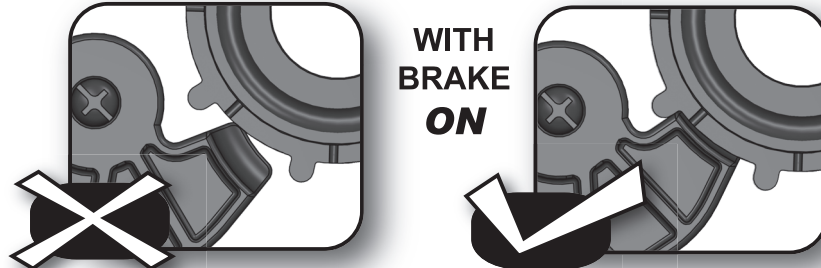
BRAKE ADJUSTMENT

There are two places to adjust the cable tension. Both use the same cable bolt and nut assembly. The first is just below the brake handle. By pulling out the brake tension bolt and rotating the nut clockwise, tension can be added to the brake cable, if required. The nut can also be rotated counterclockwise to release cable tension.

2

BRAKE ADJUSTMENT CONTINUED

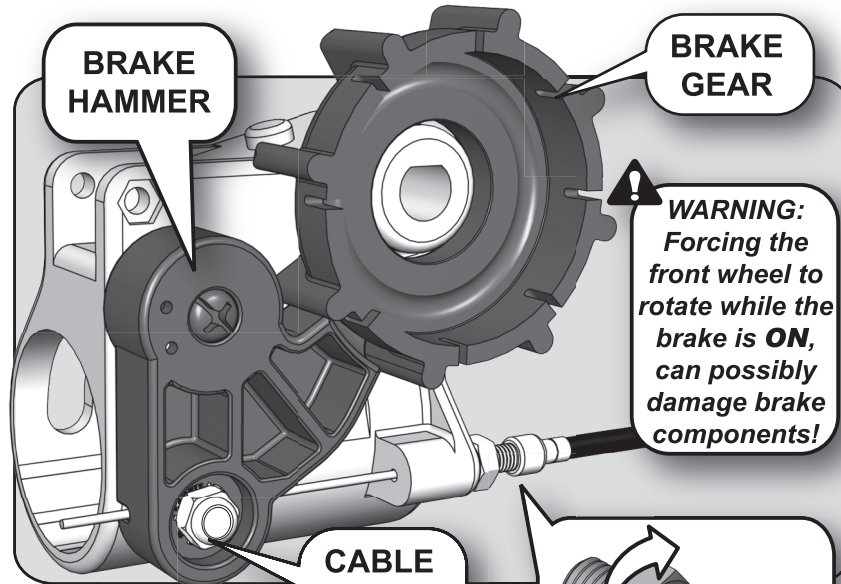
The brake cable must be adjusted to ensure full engagement of the **BRAKE GEAR** and **BRAKE HAMMER** when the brake is in the **ON** position. A clicking noise while the cart is in motion and the brake is in the **OFF** position, indicates too much tension in the brake cable.



WRONG!

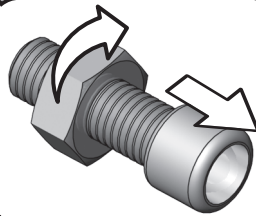
**WITH
BRAKE
ON**

CORRECT!

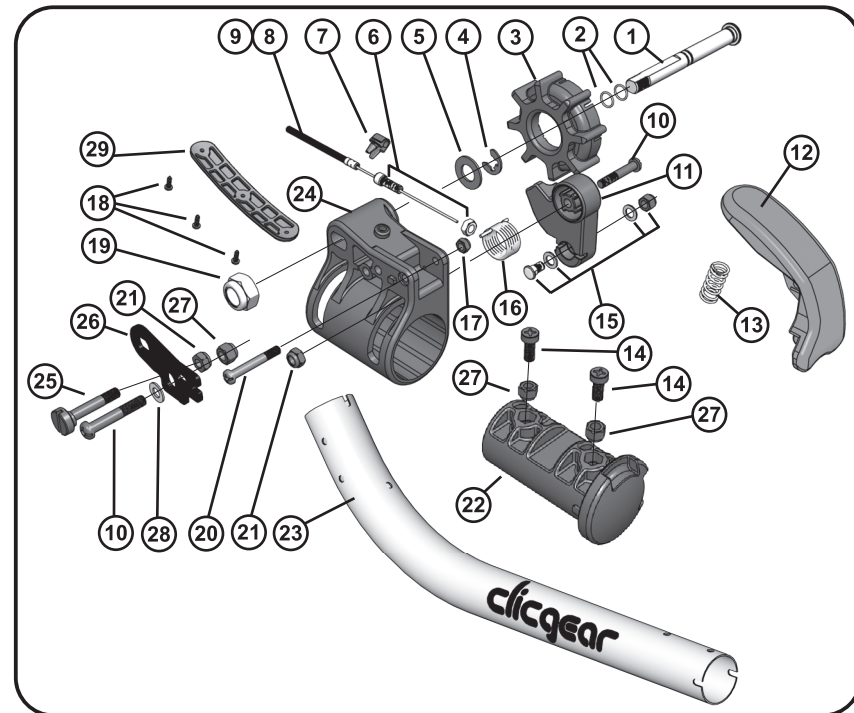


CABLE NUT

If the cable can't be adjusted with the cable tension nut and bolt assemblies, the **CABLE NUT** can be loosened and the cable position reset using a 10mm Socket.



PARTS - FRONT WHEEL PIVOT



1 12mm X 113mm FRONT AXLE

3 BRAKE GEAR

5 M12 WASHER

7 CABLE HOLDER 45mm TUBE

9 BRAKE CABLE

11 BRAKE HAMMER

13 SPRING 12mm X 27mm

15 CABLE NUT ASSEMBLY

17 M5 NYLOCK NUT

19 M12 NYLOCK NUT

21 M6 NYLOCK NUT

23 FRONT TUBE

25 M6 WHEEL ADJUST SCREW

27 M6 NYLOCK ANCHOR NUT

29 TUBING GUARD

2 M12 O-RING

4 M12 C-CLIP

6 CABLE ADJUST NUT AND BOLT

8 BRAKE CABLE SHEATH

10 M6 X 35mm BOLT

12 FRONT WHEEL LOCK

14 M6 X 15mm BOLT PIVOT STOP

16 BRAKE SPRING 22mm X 12mm

18 ST3.0 X 10mm PA SCREW

20 M5 X 34mm BOLT

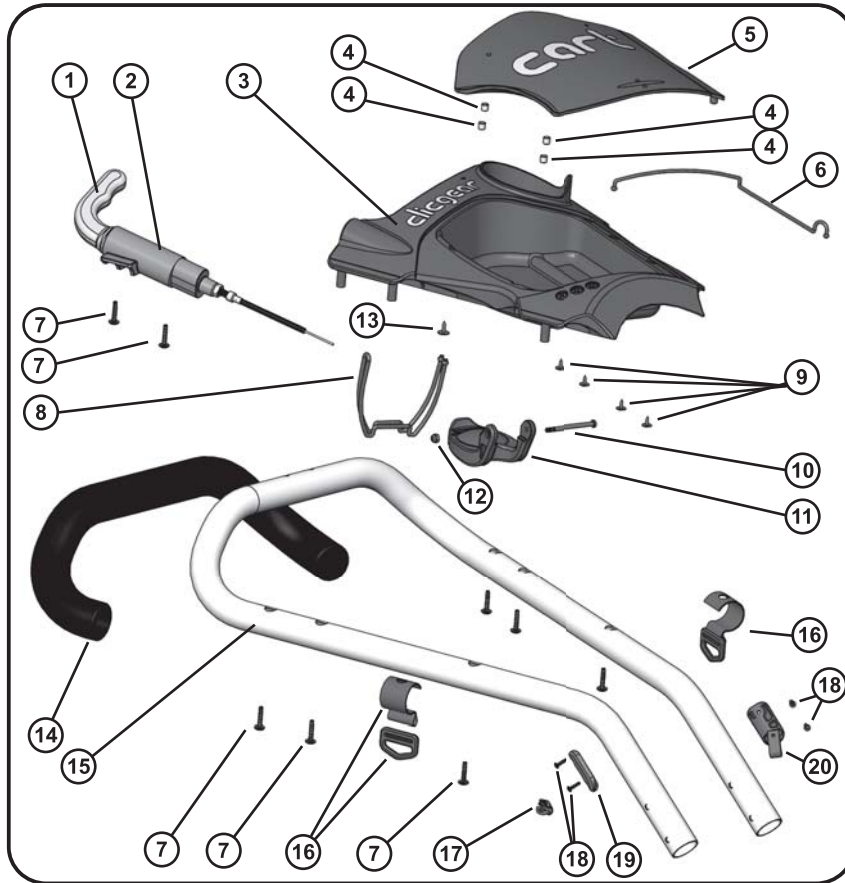
22 WHEEL PIVOT PLUG

24 WHEEL PIVOT

26 WHEEL ADJUST PLATE

28 M6 WASHER

PARTS - HANDLE ASSEMBLY



- 1 BRAKE HANDLE
- 3 TRAY
- 5 TRAY LID
- 7 ST4.0 X 18mm PA SCREW
- 9 ST2.6 X 8mm PWA SCREW
- 11 CUP HOLDER
- 13 ST3.0 X 10mm PWA SCREW
- 15 HANDLE TUBE
- 17 CABLE HOLDER 25mm TUBE

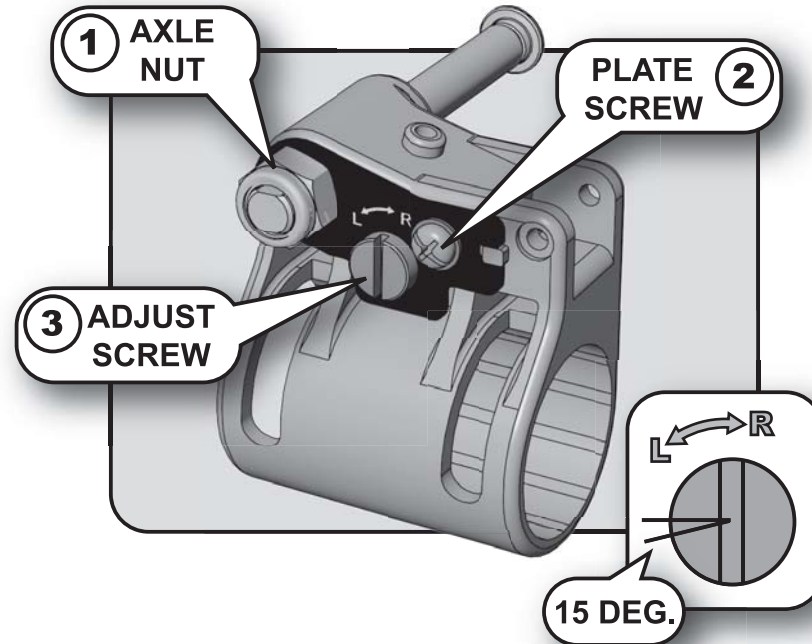
- 2 BRAKE CYLINDER
- 4 6mm MAGNET
- 6 TRAY LID ELASTIC CORD
- 8 CUP HOLDER ELASTIC CORD
- 10 M4 X 48mm BOLT
- 12 M4 NYLOCK NUT
- 14 HANDLE FOAM
- 16 TOWEL HOOK C/W STRAP
- 18 ST3.0 X 10mm PA SCREW
- 19 HANDLE GUARD (RIGHT)
- 20 HANDLE GUARD (LEFT)

11

FRONT WHEEL ALIGNMENT

If your cart is not tracking straight and requires the front wheel alignment to be adjusted, please follow these steps.

First, determine which direction the cart is turning or tracking by testing it on a long flat surface. Second, loosen the **AXLE NUT (1)** a half turn and loosen the **PLATE SCREW (2)** one full turn to allow adjustment.



For a cart that turns too much to the Right before adjustment, turning the **ADJUST SCREW (3)** towards the Left or "L" direction will adjust the alignment more to the Left. For a cart that turns too much to the Left, turn the **ADJUST SCREW** towards the Right or "R" direction.

Turn the **ADJUST SCREW (3)** in small increments of approximately 15 degrees. Test after each turn until the alignment is corrected.

When alignment is correct, tighten the **AXLE NUT (1)** one half turn and the **PLATE SCREW (2)** one full turn, being careful not to over tighten these components.

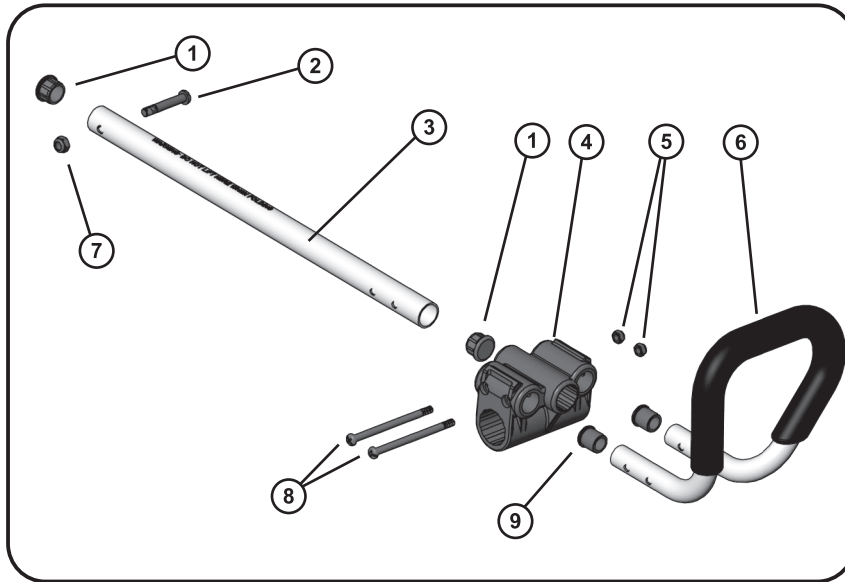
4

CLICGEAR PARTS POLICY

The drawings contained in this user guide are here to assist in the ordering of replacement parts and to clarify parts for warranty purposes. Every effort will be made to keep this manual current with design changes and modifications to the Clicgear Cart. The model number of your cart is important in communicating with Clicgear about your cart. Please have it ready before contacting us.

MODEL
1.0

PARTS - LOWER BAG SADDLE ASSEMBLY

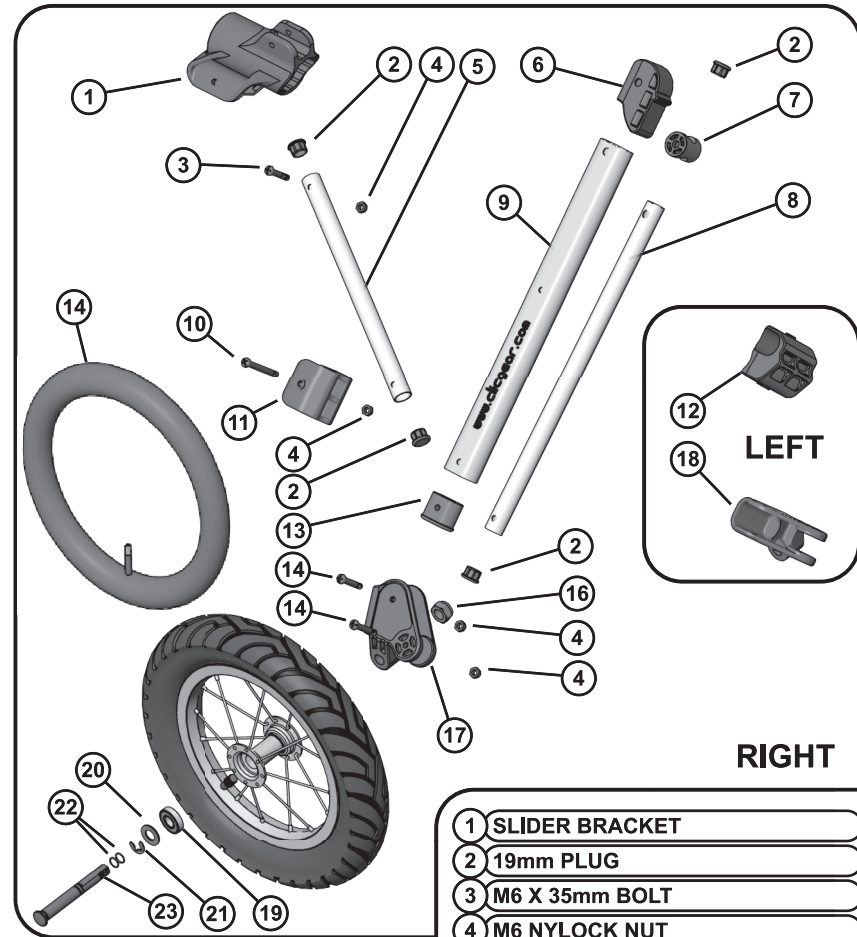


- 1 19mm END PLUG
- 3 LOWER HINGE TUBE
- 5 M5 NYLOCK NUT
- 7 M6 NYLOCK NUT
- 9 16mm END PLUG

- 2 M6 X 37mm BOLT
- 4 LOWER SADDLE BLOCK
- 6 BAG BOTTOM SUPPORT
- 8 M5 X 74mm BOLT

5

PARTS - WHEEL STRUT ASSEMBLY

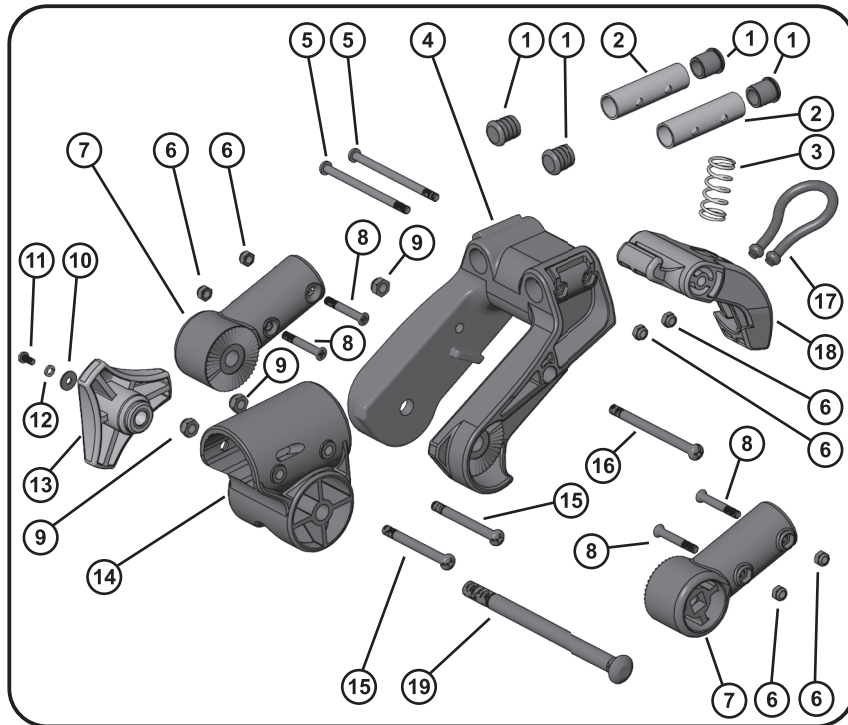


- 5 STRUT PUSH ROD TUBE
- 7 SECOND STRUT TOP SUPPORT
- 9 MAIN STRUT TUBE
- 11 RIGHT STRUT BRACKET
- 13 MAIN STRUT END PLUG
- 15 M6 X 40mm BOLT
- 17 RIGHT LOWER STRUT PIVOT
- 19 BEARING
- 21 M12 C-CLIP
- 23 12mm X 99mm REAR AXLE

- 1 SLIDER BRACKET
- 2 19mm PLUG
- 3 M6 X 35mm BOLT
- 4 M6 NYLOCK NUT
- 6 MAIN STRUT TOP PLUG
- 8 SECONDARY STRUT TUBE
- 10 M6 X 60mm BOLT
- 12 LEFT STRUT BRACKET
- 14 TUBE
- 16 M12 NYLOCK NUT
- 18 LEFT LOWER STRUT PIVOT
- 20 M12 WASHER
- 22 M12 O-RING

10

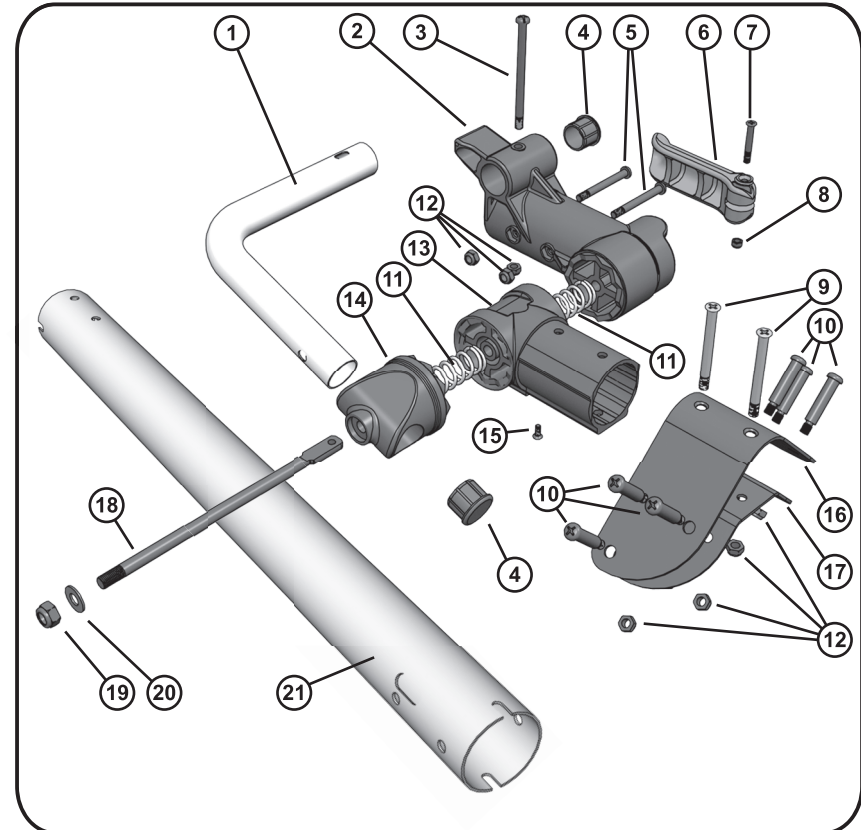
PARTS - UPPER SADDLE ASSEMBLY



- | | |
|----|------------------------|
| 1 | 16mm END PLUG |
| 3 | SPRING 16mm X 35mm |
| 5 | M5 X 74mm BOLT |
| 7 | HANDLE PIVOT |
| 9 | M6 NYLOCK NUT |
| 11 | M4 X 8mm BOLT |
| 13 | KNOB |
| 15 | M6 X 56mm BOLT |
| 17 | STRING LOOP |
| 19 | M10 X 140mm HINGE BOLT |

- | | |
|----|--------------------|
| 2 | SADDLE PIN TUBE |
| 4 | SADDLE PIVOT |
| 6 | M6 NYLOCK NUT |
| 8 | M5 X 34mm CSK BOLT |
| 10 | M4 WASHER |
| 12 | M4 LOCK WASHER |
| 14 | HINGE PIVOT |
| 16 | M6 X 75mm BOLT |
| 18 | HOOK |

PARTS - HINGE ASSEMBLY

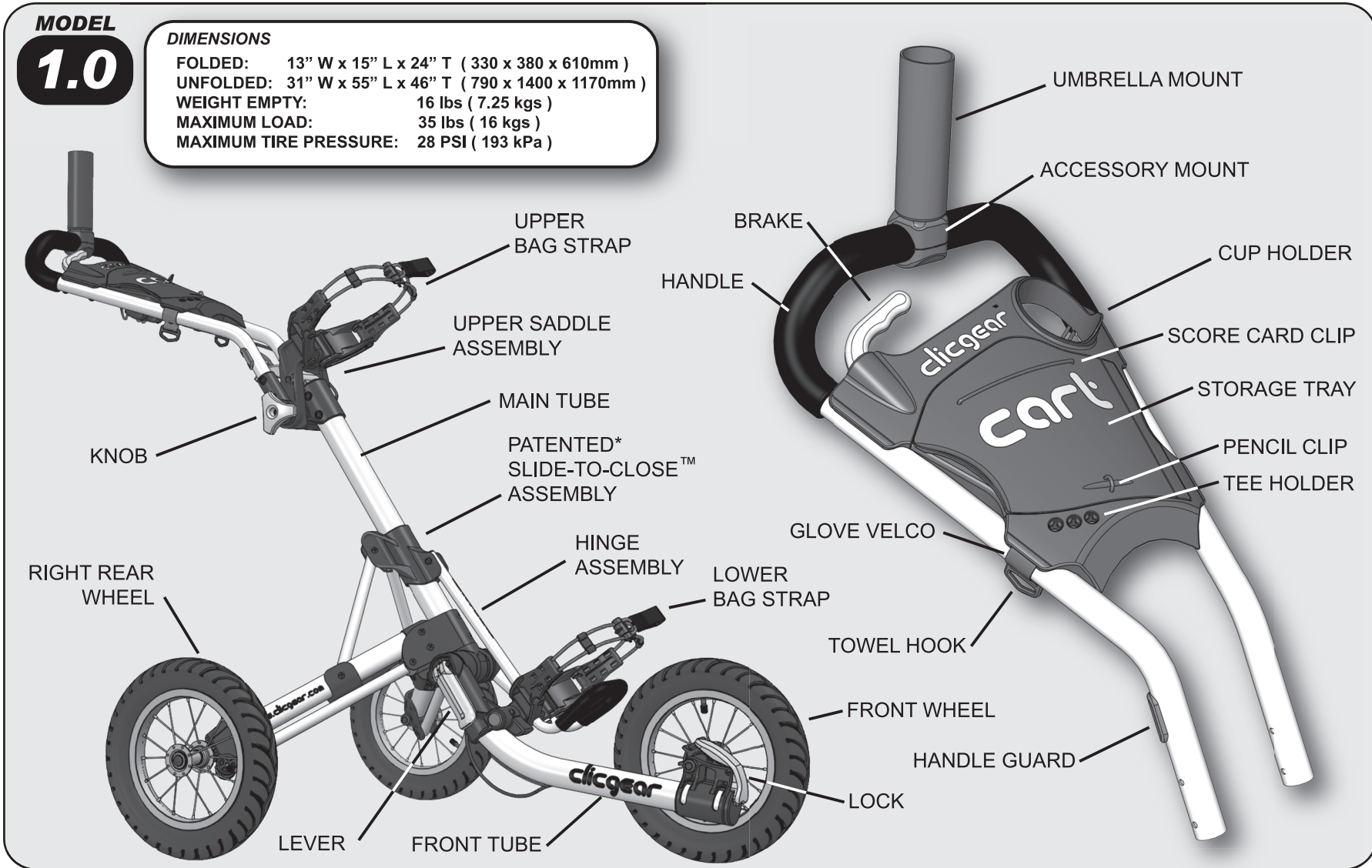


- | | |
|----|--------------------|
| 1 | BRACE PIPE |
| 3 | M6 X 86mm BOLT |
| 5 | M6 X 56mm BOLT |
| 7 | M5 X 34mm CSK BOLT |
| 9 | M6 X 62mm CSK BOLT |
| 11 | SPRING 20mm X 45mm |
| 13 | LOWER HINGE CENTER |
| 15 | M4 X 10mm CSK BOLT |
| 17 | LOWER STRUT PLATE |
| 19 | M8 NYLOCK NUT |
| 21 | MAIN TUBE |

- | | |
|----|-----------------------|
| 2 | LOWER HINGE ARM MOUNT |
| 4 | 25mm END PLUG |
| 6 | LEVER |
| 8 | M5 NYLOCK NUT |
| 10 | M6 STRUT BOLTS |
| 12 | M6 NYLOCK NUT |
| 14 | LOWER HINGE CAP |
| 16 | TOP STRUT PLATE |
| 18 | M8 X 188mm HINGE BOLT |
| 20 | M8 WASHER |

SPECIFICATIONS

Some important features and their location on your Clicgear Cart.



*US AND INTERNATIONAL PATENTS PENDING